



foto 01



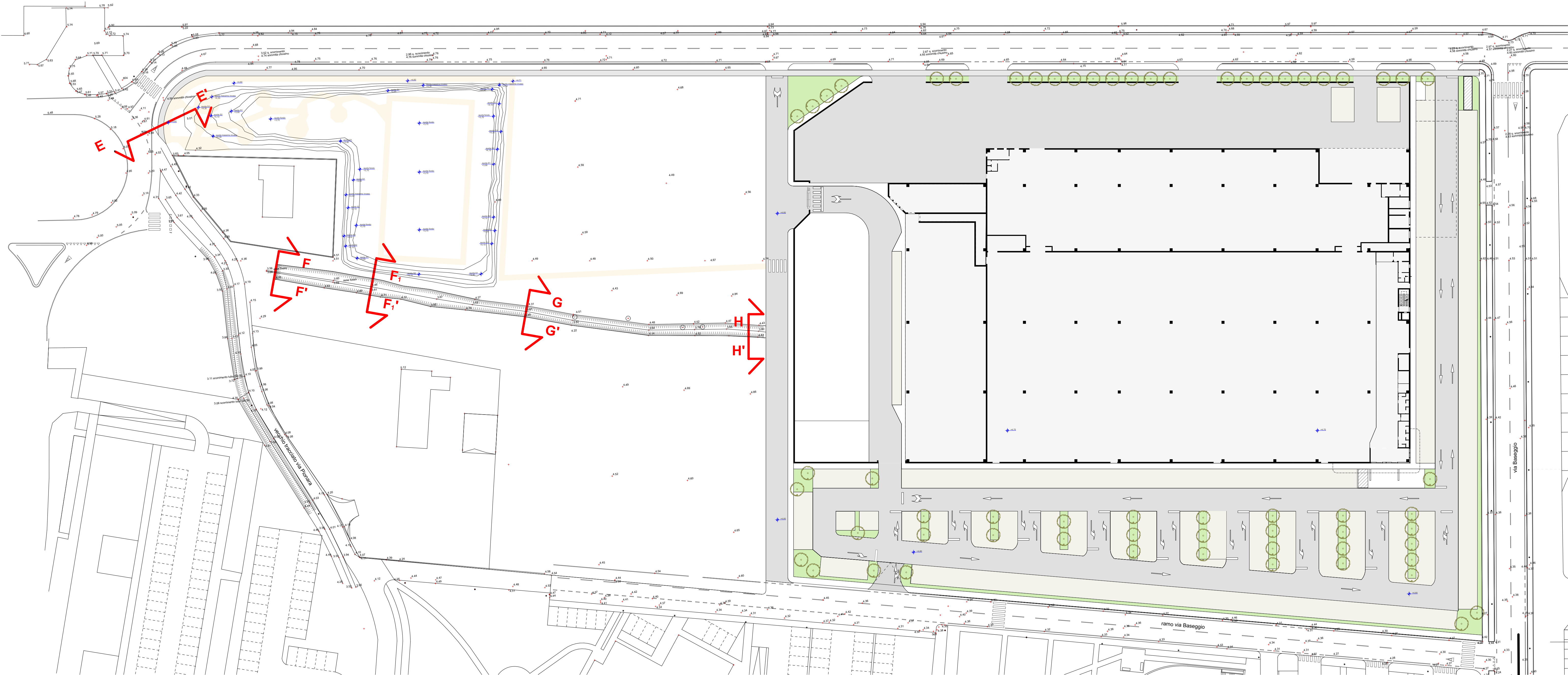
foto 02



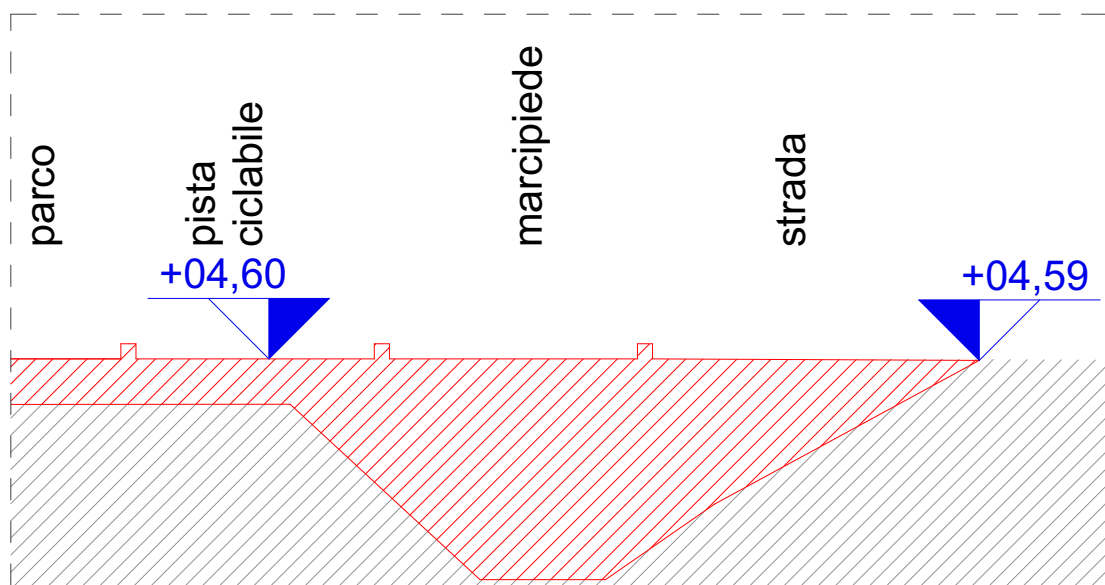
foto 03

PROFILO LONGITUDINALE SDP

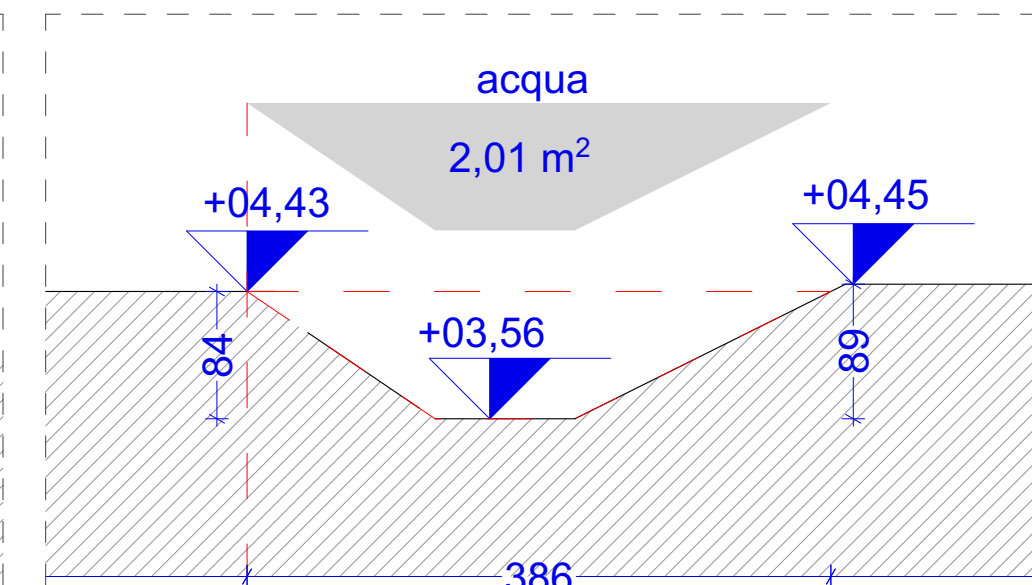
<div>Q.RIF.5.68</div> <div>Lunghezze 1:1000</div> <div>Altezze 1:100</div>				
	SEZIONI	F-F	G-G	H-H
	DISTANZE PROGRESSIVE	0.00	63.7	139.3
	DISTANZE PARZIALI		63.7	75.4
	QUOTE ASSE FOSSO	3.56	3.67	3.84



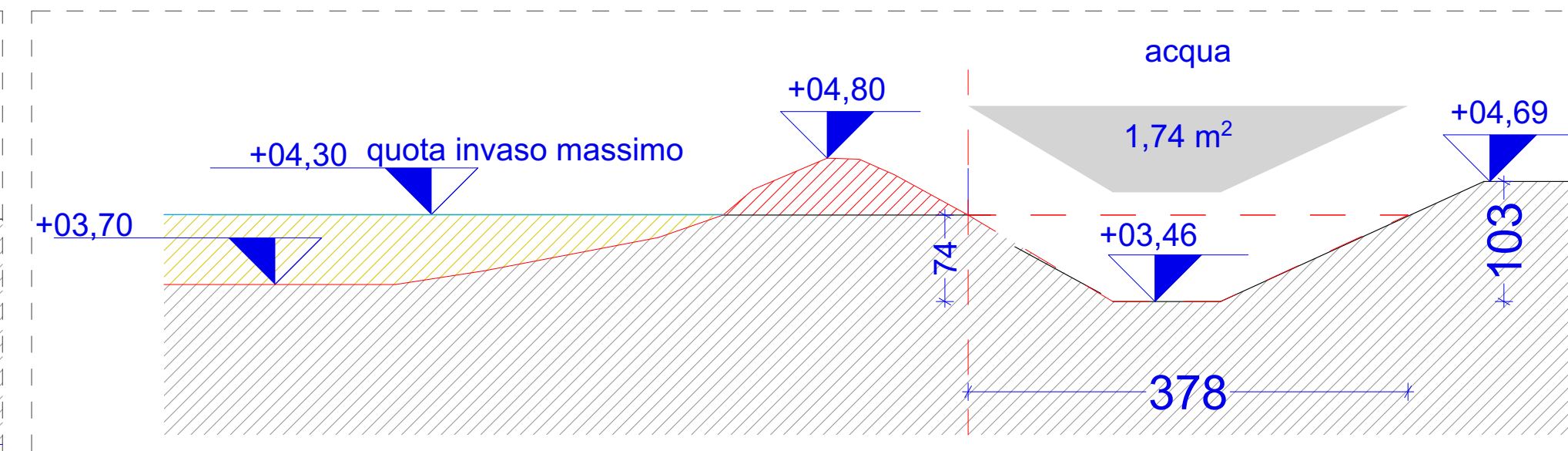
PLANIMETRIA STATO DI PROGETTO
SCALA:1:500



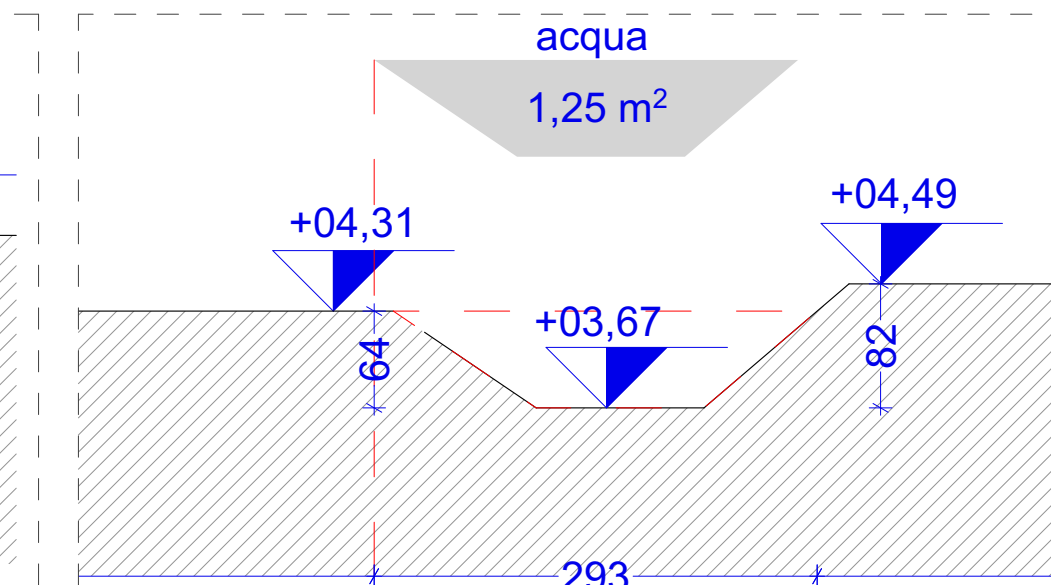
SEZIONE EE'



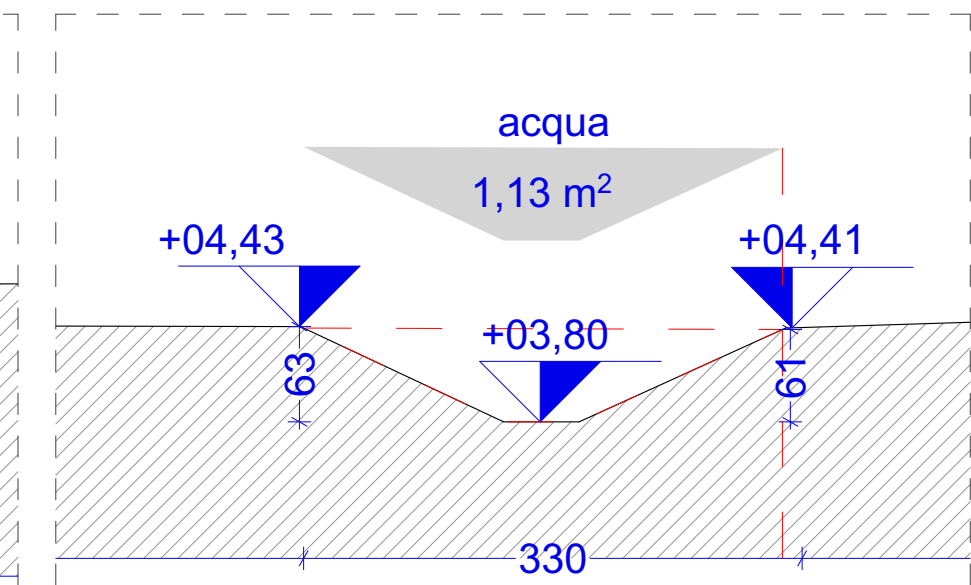
SEZIONE FF'



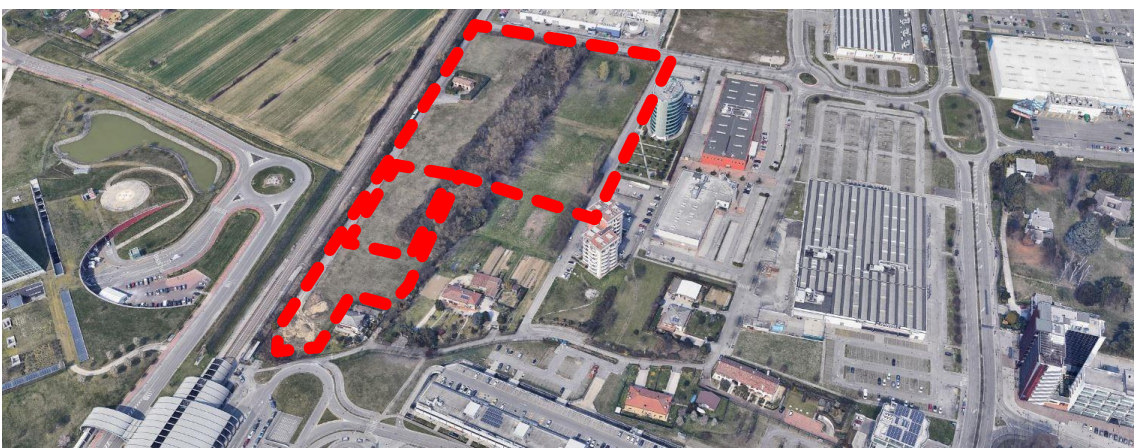
SEZIONE F1F1'



SEZIONE GG'



SEZIONE HH'




COMUNE DI VENEZIA
Città Metropolitana di Venezia

BRICOMAN ITALIA S.R.L.
Società a responsabilità limitata con unico socio (soggetta ad attività di direzione e coordinamento della "SIB - Società Italiana Bricolage S.p.A.") Sede: Rozzano, Via Guglielmo Marconi n. 24



REALIZZAZIONE DI UNA GRANDE STRUTTURA DI VENDITA TIPOLOGIA SINGOLA
Progetto definitivo per la realizzazione di un nuovo edificio commerciale tipo
BRICOMAN nella zona identificata "AEV Terraglio" in Via Cesco Baseggio Mestre

PROGETTO DEFINITIVO

STRUTTURA DI PROGETTAZIONE		AI PROGETTI	
Progetto architettonico	Arch. Andrea Bortin	 AI PROGETTI srl via Progetto Impianti, 14 - 30174 Mestre - Ve tel 041 975770 fax 041 976020 info@ai-progetti.it C.F.P. 006.02475500773 www.ai-progetti.it REA 311556	
Progetto strutture	Ing. Valterina Corras Ing. Antonio Alessandrini		
Progetto impianti	Ing. Antonio Alessandrini Arch. Massimo Furlan		
Collaboratori	Arch. A. Crisan Arch. V. Consiglio P.E. F. Trevisanolo Ing. A. Lungu Ing. V. Iosco		
Consulenti esterni	Impianti A&S Engineering Adriano Studio Associato Alberto Dechich	Acustica p.l. Trivellato Antonio	Ambientale Dr. Fis. Giampiero Malvisi

TITOLO		ELABORATO	
FOSSATI STATO DI PROGETTO		105	
DISCIPLINA		Idraulica	
REVISIONE	DATA	OGGETTO	SCALA
REV. 01	20/07/2023	Plano idraulico	1:100, 1:500
REV. 02			
REV. 03			
REV. 04			
REV. 05			
REV. 06			
REV. 07			
REV. 08			
REV. 09			
REV. 10			
REV. 11			
REV. 12			
REV. 13			
REV. 14			
REV. 15			
REV. 16			
REV. 17			
REV. 18			
REV. 19			
REV. 20			
REV. 21			
REV. 22			
REV. 23			
REV. 24			
REV. 25			
REV. 26			
REV. 27			
REV. 28			
REV. 29			
REV. 30			
REV. 31			
REV. 32			
REV. 33			
REV. 34			
REV. 35			
REV. 36			
REV. 37			
REV. 38			
REV. 39			
REV. 40			
REV. 41			
REV. 42			
REV. 43			
REV. 44			
REV. 45			
REV. 46			
REV. 47			
REV. 48			
REV. 49			
REV. 50			
REV. 51			
REV. 52			
REV. 53			
REV. 54			
REV. 55			
REV. 56			
REV. 57			
REV. 58			
REV. 59			
REV. 60			
REV. 61			
REV. 62			
REV. 63			
REV. 64			
REV. 65			
REV. 66			
REV. 67			
REV. 68			
REV. 69			
REV. 70			
REV. 71			
REV. 72			
REV. 73			
REV. 74			
REV. 75			
REV. 76			
REV. 77			
REV. 78			
REV. 79			
REV. 80			
REV. 81			
REV. 82			
REV. 83			
REV. 84			
REV. 85			
REV. 86			
REV. 87			
REV. 88			
REV. 89			
REV. 90			
REV. 91			
REV. 92			
REV. 93			
REV. 94			
REV. 95			
REV. 96			
REV. 97			
REV. 98			
REV. 99			
REV. 100			
REV. 101			
REV. 102			
REV. 103			
REV. 104			
REV. 105			
REV. 106			
REV. 107			
REV. 108			
REV. 109			
REV. 110			
REV. 111			
REV. 112			
REV. 113			
REV. 114			
REV. 115			
REV. 116			
REV. 117			
REV. 118			
REV. 119			
REV. 120			
REV. 121			
REV. 122			
REV. 123			
REV. 124			
REV. 125			
REV. 126			
REV. 127			
REV. 128			
REV. 129			
REV. 130			
REV. 131			
REV. 132			
REV. 133			
REV. 134			
REV. 135			
REV. 136			
REV. 137			
REV. 138			
REV. 139			
REV. 140			
REV. 141			
REV. 142			
REV. 143			
REV. 144			
REV. 145			
REV. 146			
REV. 147			
REV. 148			
REV. 149			
REV. 150			
REV. 151			
REV. 152			
REV. 153			
REV. 154			
REV. 155			
REV. 156			
REV. 157			
REV. 158			
REV. 159			
REV. 160			
REV. 161			
REV. 162			
REV. 163			
REV. 164			
REV. 165			
REV. 166			
REV. 167			
REV. 168			
REV. 169			
REV. 170			
REV. 171			
REV. 172			
REV. 173			
REV. 174			
REV. 175			
REV. 176			
REV. 177			
REV. 178			
REV. 179			
REV. 180			
REV. 181			
REV. 182			
REV. 183			
REV. 184			
REV. 185			
REV. 186			
REV. 187			
REV. 188			
REV. 189			
REV. 190			
REV. 191			
REV. 192			
REV. 193			
REV. 194			
REV. 195			
REV. 196			
REV. 197			
REV. 198			
REV. 199			
REV. 200			
REV. 201			
REV. 202			
REV. 203			
REV. 204			
REV. 205			
REV. 206			
REV. 207			
REV. 208			
REV. 209			
REV. 210			
REV. 211			
REV. 212			
REV. 213			
REV. 214			
REV. 215			
REV. 216			
REV. 217			
REV. 218			
REV. 219			
REV. 220			
REV. 221			
REV. 222			
REV. 223			
REV. 224			
REV. 225			
REV. 226			
REV. 227			
REV. 228			
REV. 229			
REV. 230			
REV. 231			
REV. 232			
REV. 233			
REV. 234			
REV. 235			
REV. 236			
REV. 237			
REV. 238			
REV. 239			
REV. 240			
REV. 241			
REV. 242			
REV. 243			
REV. 244			
REV. 245			
REV. 246			
REV. 247			
REV. 248			
REV. 249			
REV. 250			
REV. 251			
REV. 252			
REV. 253			
REV. 254			
REV. 255			
REV. 256			
REV. 257			
REV. 258			
REV. 259			
REV. 260			
REV. 261			
REV. 262			
REV. 263			
REV. 264			
REV. 265			
REV. 266			
REV. 267			
REV. 268			
REV. 269			
REV. 270			
REV. 271			
REV. 272			
REV. 273			
REV. 274			
REV. 275			
REV. 276			
REV. 277			
REV. 278			
REV. 279			
REV. 280			
REV. 281			
REV. 282			
REV. 283			
REV. 284			
REV. 285			
REV. 286			
REV. 287			
REV. 288			
REV. 289			
REV. 290			
REV. 291			
REV. 292			
REV. 293			
REV. 294			
REV. 295			
REV. 296			
REV. 297			
REV. 298			
REV. 299			
REV. 300			
REV. 301			
REV. 302			
REV. 303			
REV. 304			
REV. 305			
REV. 306			
REV. 307			
REV. 308			
REV. 309			
REV. 310			
REV. 311			
REV. 312			
REV. 313			
REV. 314			
REV. 315			
REV. 316			
REV. 317			
REV. 318			
REV. 319			
REV. 320			
REV. 321			
REV. 322			
REV. 323			
REV. 324			
REV. 325			
REV. 326			
REV. 327			
REV. 328			
REV. 329			
REV. 330			
REV. 331			
REV. 332			
REV. 333			
REV. 334			
REV. 335			
REV. 336			
REV. 337			
REV. 338			
REV. 339			
REV. 340			
REV. 341			
REV. 342			
REV. 343			
REV. 344			
REV. 345			
REV. 346			
REV. 347			
REV. 348			
REV. 349			
REV. 350			
REV. 351			
REV. 352			
REV. 353			
REV. 354			
REV. 355			
REV. 356			
REV. 357			
REV. 358			
REV. 359			
REV. 360			
REV. 361			
REV. 362			
REV. 363			
REV. 364			
REV. 365			
REV. 366			
REV. 367			